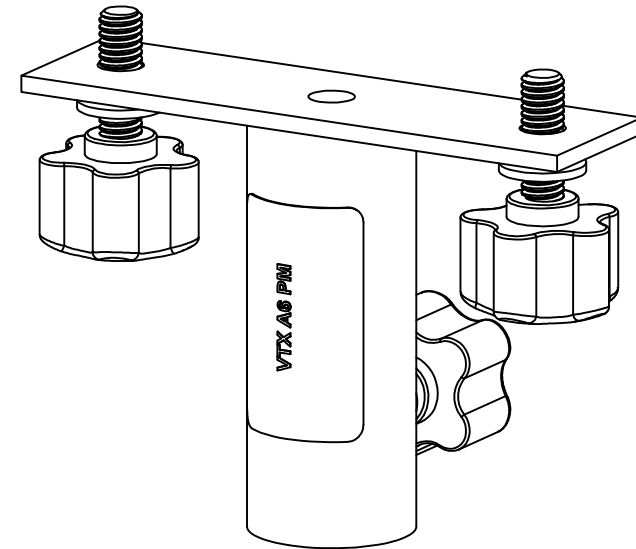
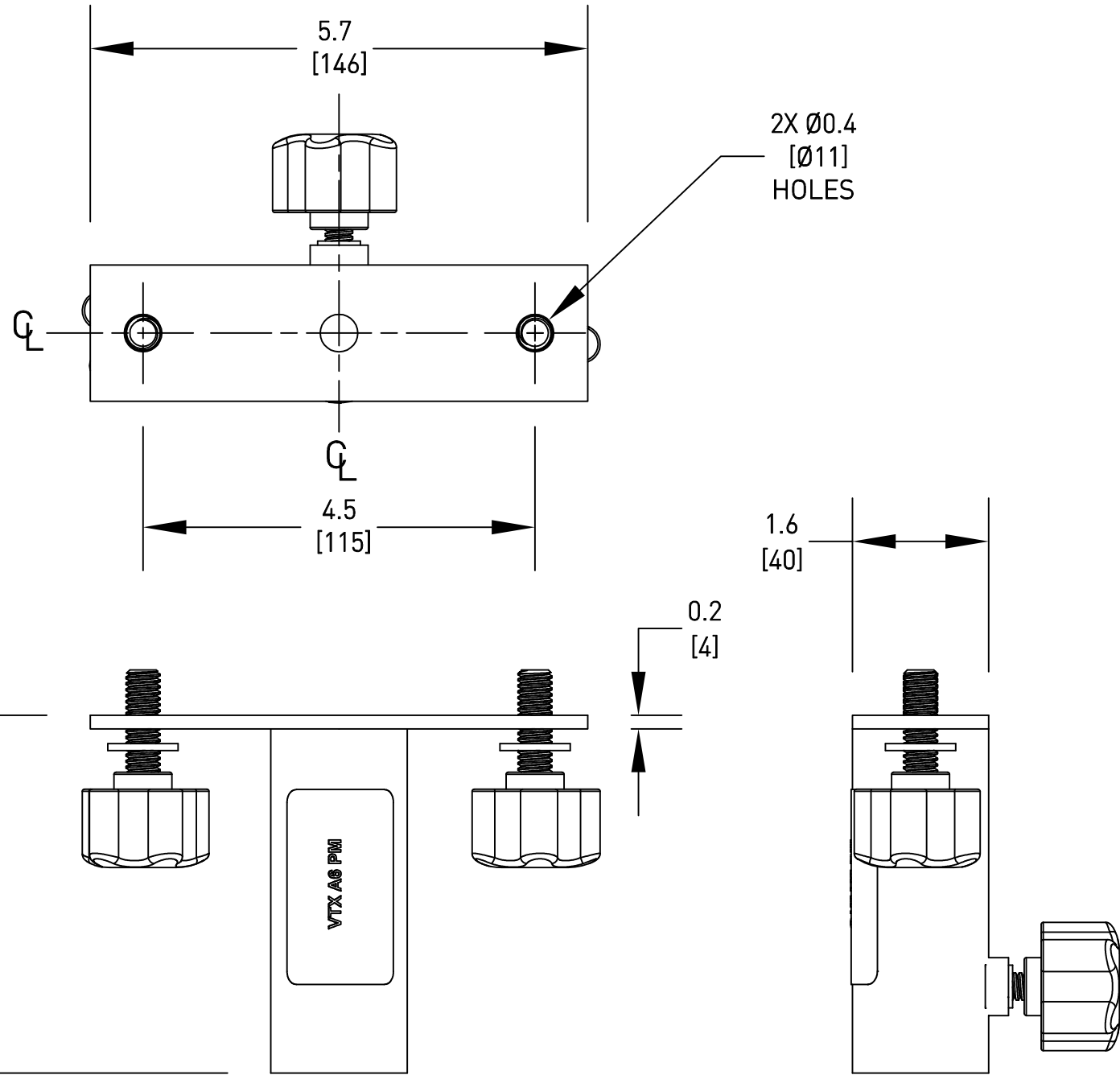


THESE DRAWINGS AND SPECIFICATIONS ARE THE PROPERTY OF JBL INCORPORATED. THEY ARE ISSUED IN STRICT CONFIDENCE AND SHALL NOT BE REPRODUCED OR USED AS THE BASIS FOR MANUFACTURE OR APPARATUS WITHOUT WRITTEN PERMISSION.

ALL MATERIAL SPECIFIED ON THIS DRAWING SHALL CONTINUALLY COMPLY WITH THE EFFECTIVE EU RoHS DIRECTIVE, CURRENTLY 2011/65/EU, INCLUDING ALL AMENDMENTS.

REVISIONS					
LTR	DESCRIPTION	DRFT	D.C	DATE	APPR
A	INITIAL RELEASE	TH		8/18/21	



4. SUITABLE FOR 35mm TUBING DIAMETER.
4. HARDWARE: (2) M10 X 1.5 CONFORT GRIP STUD KNOB.
 (2) M10 FLAT WASHER.
 (1) M8 X 1.25 CONFORT GRIP STUD KNOB.
3. WEIGHT: 0.5 KG (1.15 LBS).
2. FINISH: BLACK POWDER COAT.
1. MATERIALS: STEEL.

NOTES: (UNLESS OTHERWISE SPECIFIED)

TOLERANCES
(UNLESS OTHERWISE SPECIFIED)
X.XX ± .063 INCH
X.X ± .125 INCH
ANGULAR TOLERANCE OF 0°±30'
FRACTIONAL DIMENSIONS ± 1/32
* DIMENSIONS ARE INCHES INCHES (MM)
* ALL DIMENSIONS ARE FINISHED DIMENSIONS
* DO NOT SCALE DRAWING

HARMAN		JBL Professional 8500 Balboa Blvd Northridge, CA 91329 USA	
TITLE CUSTOMER DRAWING: VTX A6 PM			
SIZE A	DRAWING NO. 1000366981		REV A
SCALE NTS		SHEET 1 OF 1	